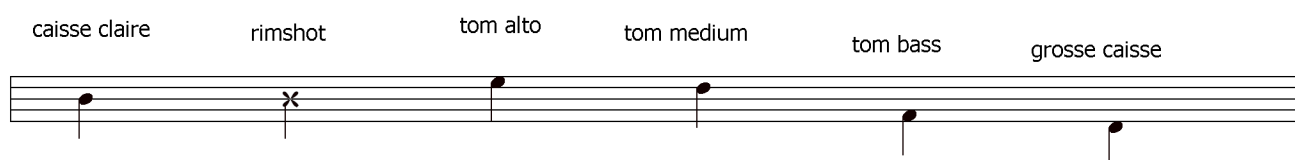


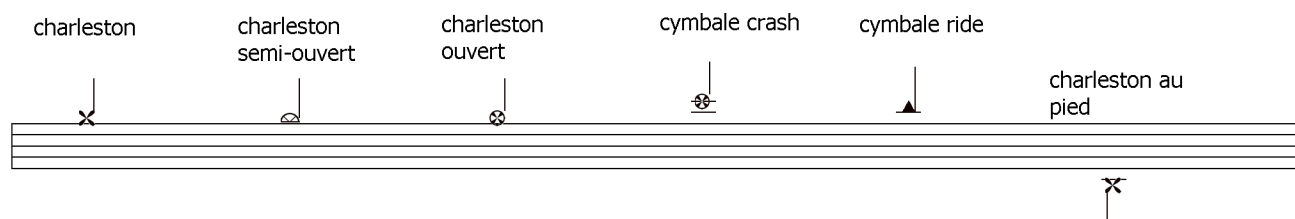
# nomenclature

( ou placement des différents instruments de la batterie sur la portée ).

## Les Peaux



## Les Métaux



### - Abreviations :

- Tom alto = T1
- Tom medium = T2
- Tom bass = T3
- caisse claire = C.C.
- grosse caisse = G.C.
- rimshot = R.S. (caisse claire frappée sur le bord).
- charleston = h.h.
- cymbale ride = C.R.

# long train running

♩ = 118

compositeur: doobie brothers

The musical score for "Long Train Running" is presented in 4/4 time. It begins with a 3-measure rest, followed by a series of rhythmic patterns. The notation includes numerous eighth and sixteenth notes, many of which are marked with an 'x' to denote a specific rhythmic value. The score is divided into sections by rests of 2 and 3 measures. The piece concludes with a final melodic flourish.

The image displays a page of musical notation for guitar, organized into eight systems. Each system consists of two staves. The upper staff of each system contains rhythmic notation with various symbols: 'x' marks, circled 'x' marks, and slash marks. The lower staff contains standard musical notation, including notes, rests, and slash marks. The notation is arranged in a continuous sequence across the page, with some systems featuring a double bar line with a slash through it, indicating a section break or a specific rhythmic change.

The image displays a musical score for guitar, consisting of seven systems of staves. Each system typically includes a treble clef staff with a guitar-specific notation (circles with 'x' for fretted notes) and a bass clef staff with standard musical notation. The score includes various musical elements such as rests, slurs, and dynamic markings. The first system has a circled 'x' on the treble staff. The second system features a double bar line with a slash. The third system includes a 'rit.' marking. The fourth system has a circled 'x' and a '3' above a thick black bar. The fifth system has a circled 'x' and a '3' above a thick black bar. The sixth system has a double bar line with a slash. The seventh system has a double bar line with a slash. The score concludes with a double bar line and repeat dots.